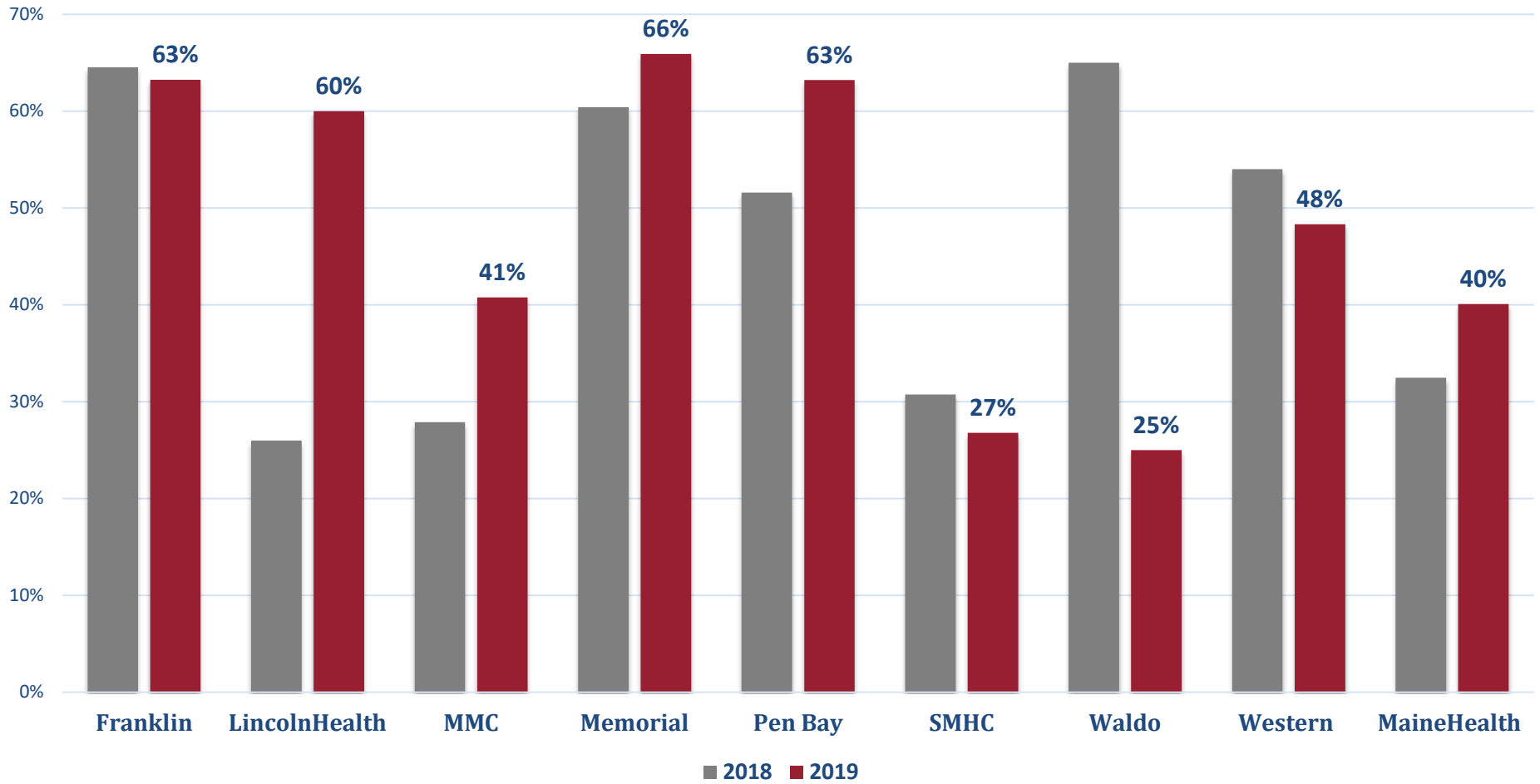


MaineHealth

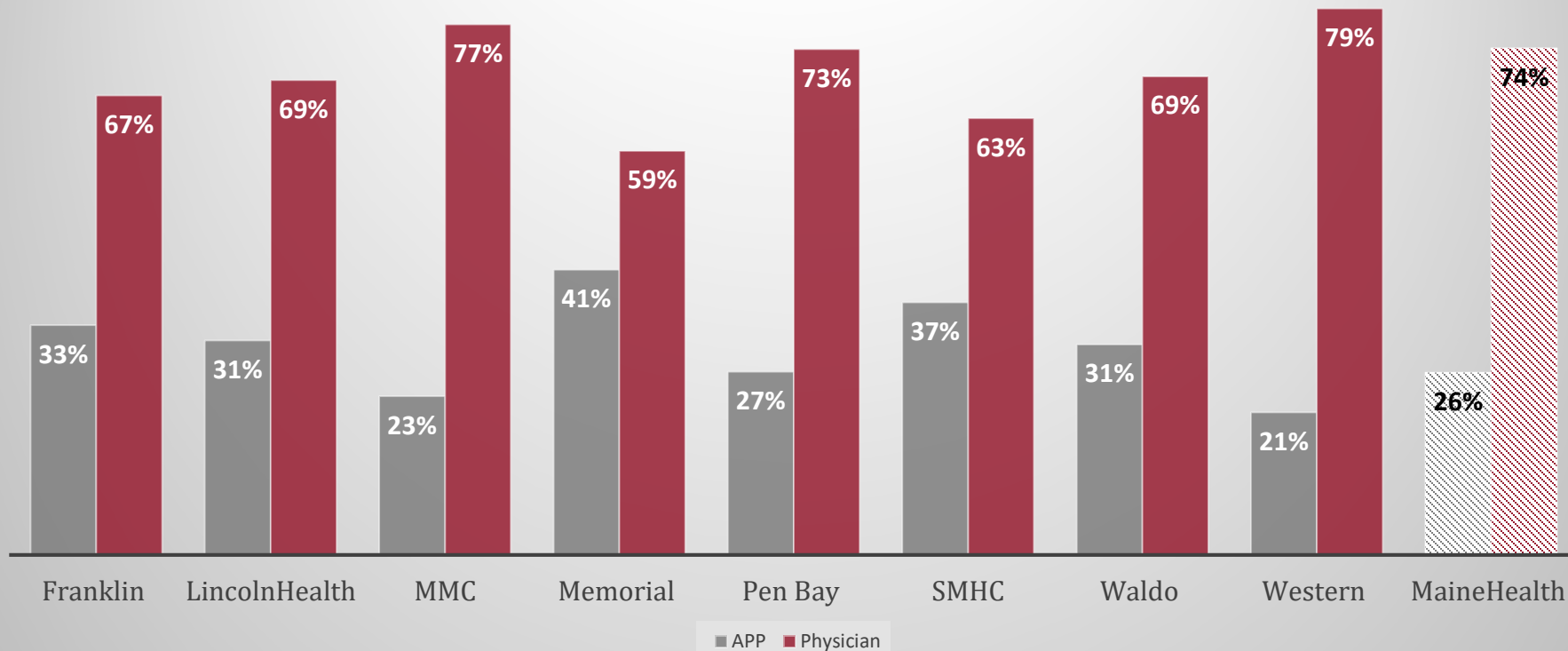
Primary Care Wellness

2019 Mini Z Provider Wellness Survey Results

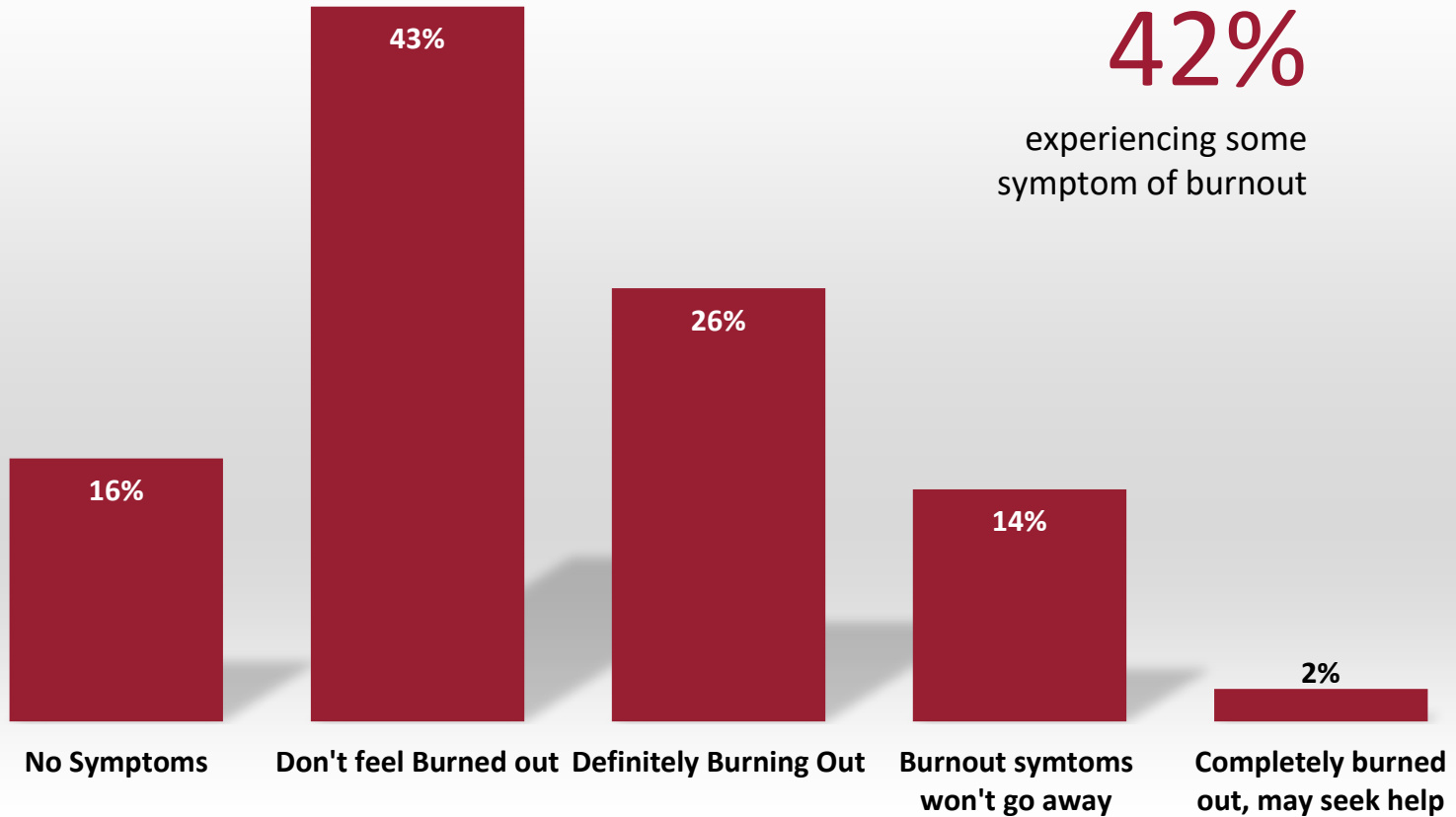
Survey Response Rates



What is your role?

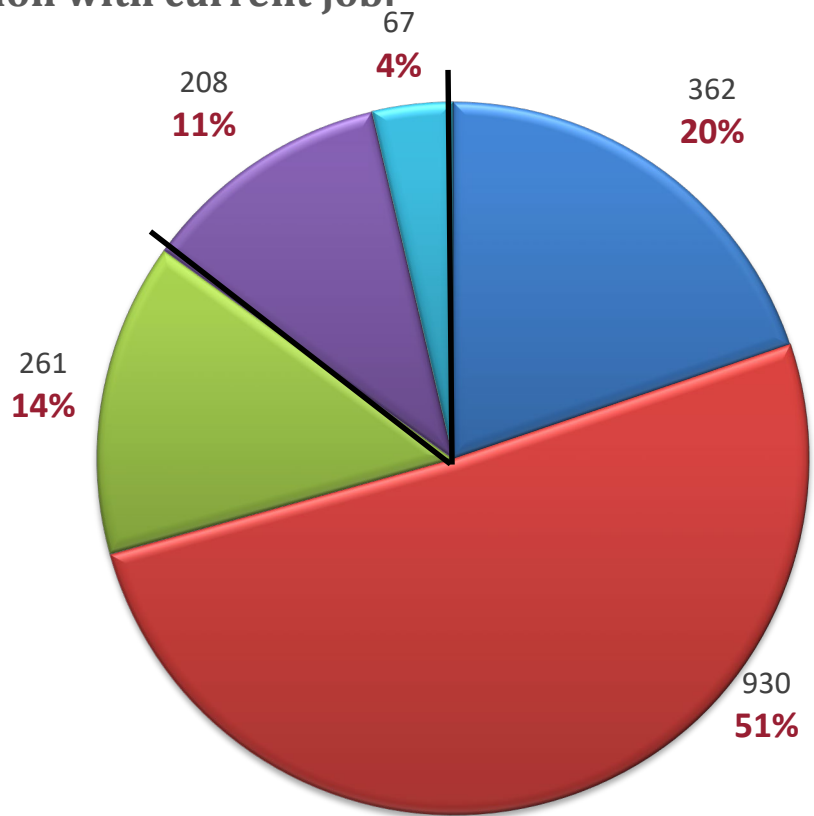


MaineHealth Burnout Rate



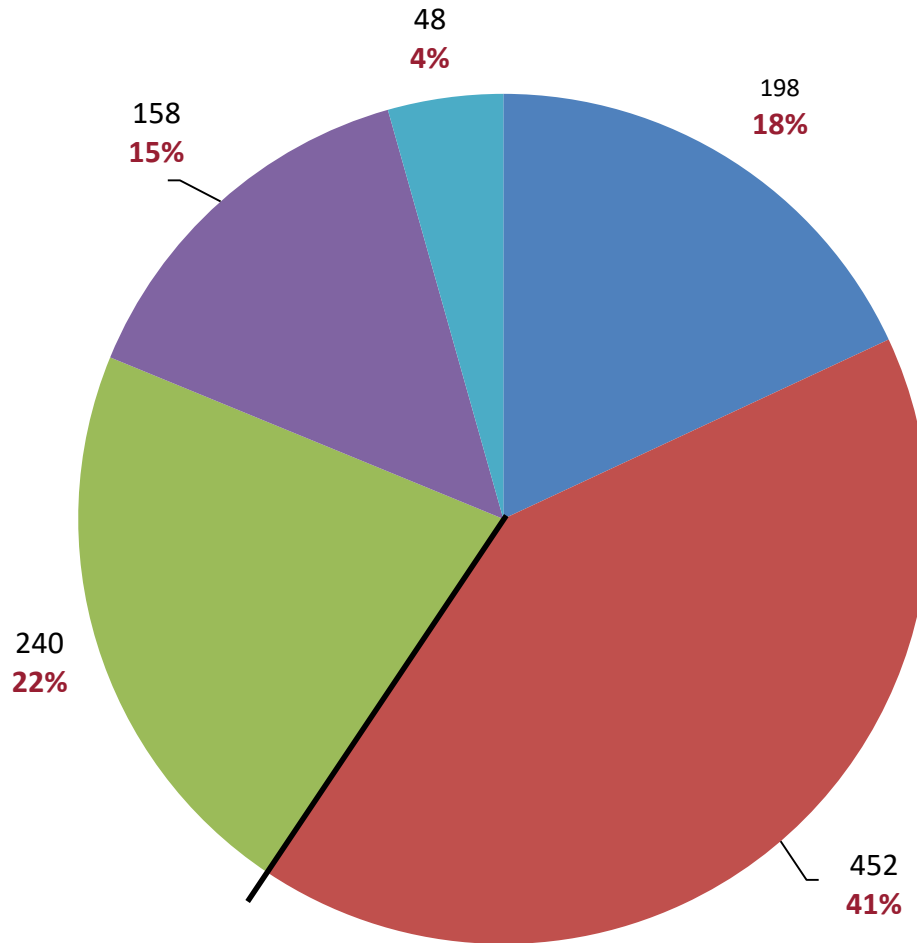
*Nation rate = 44%

Overall, satisfaction with current job:



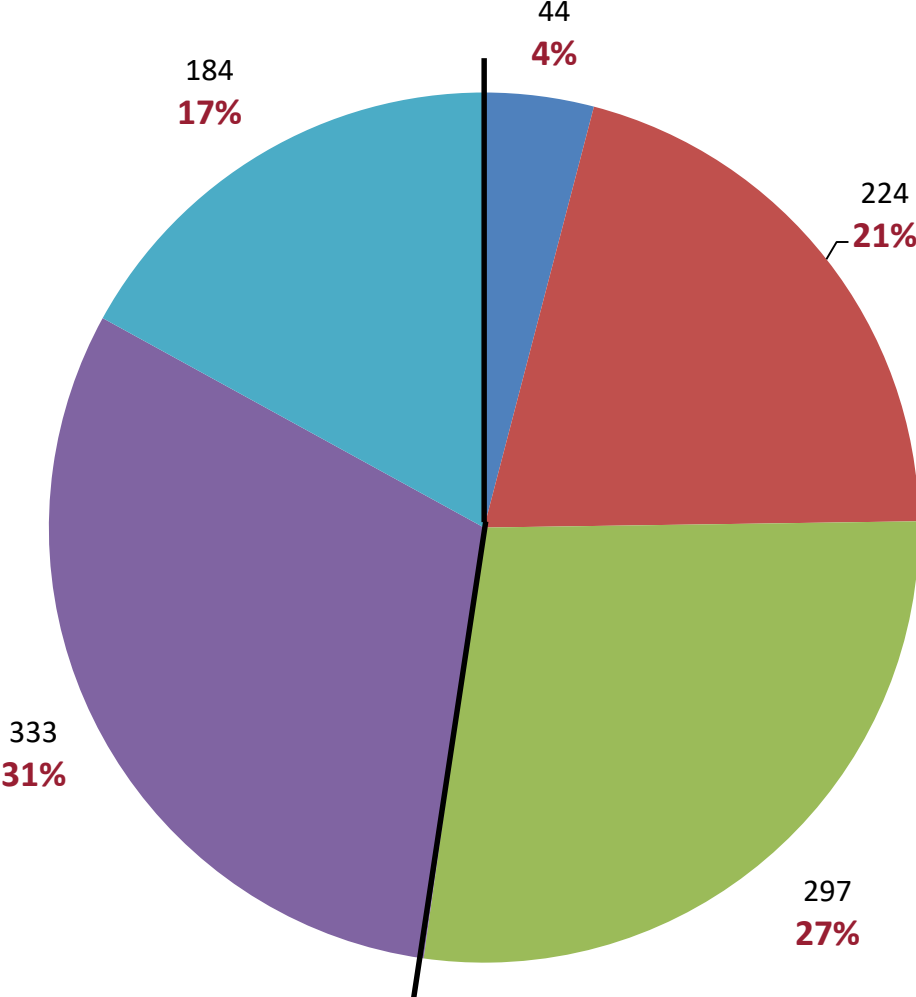
■ Strongly Agree ■ Agree ■ Neutral ■ Disagree ■ Strongly Disagree

Feel great deal of stress because of job:



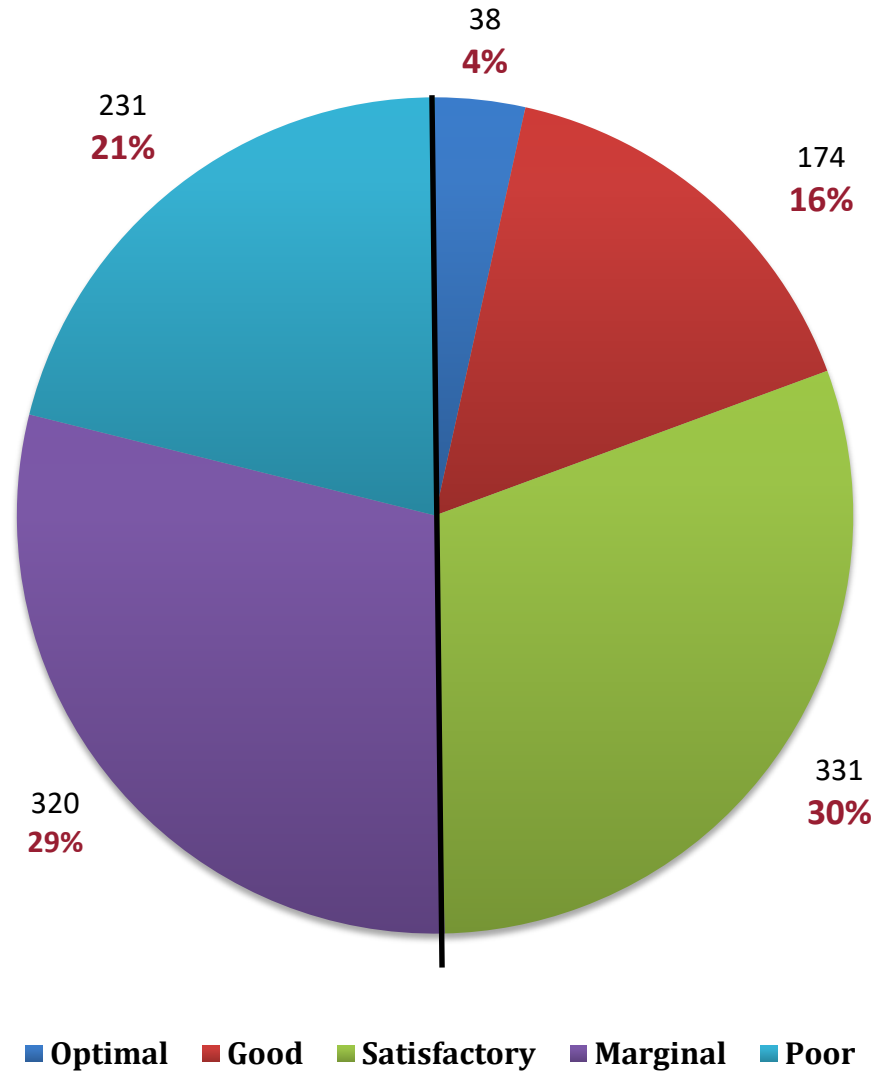
■ Strongly Agree ■ Agree ■ Neutral ■ Disagree ■ Strongly Disagree

Control of Workload

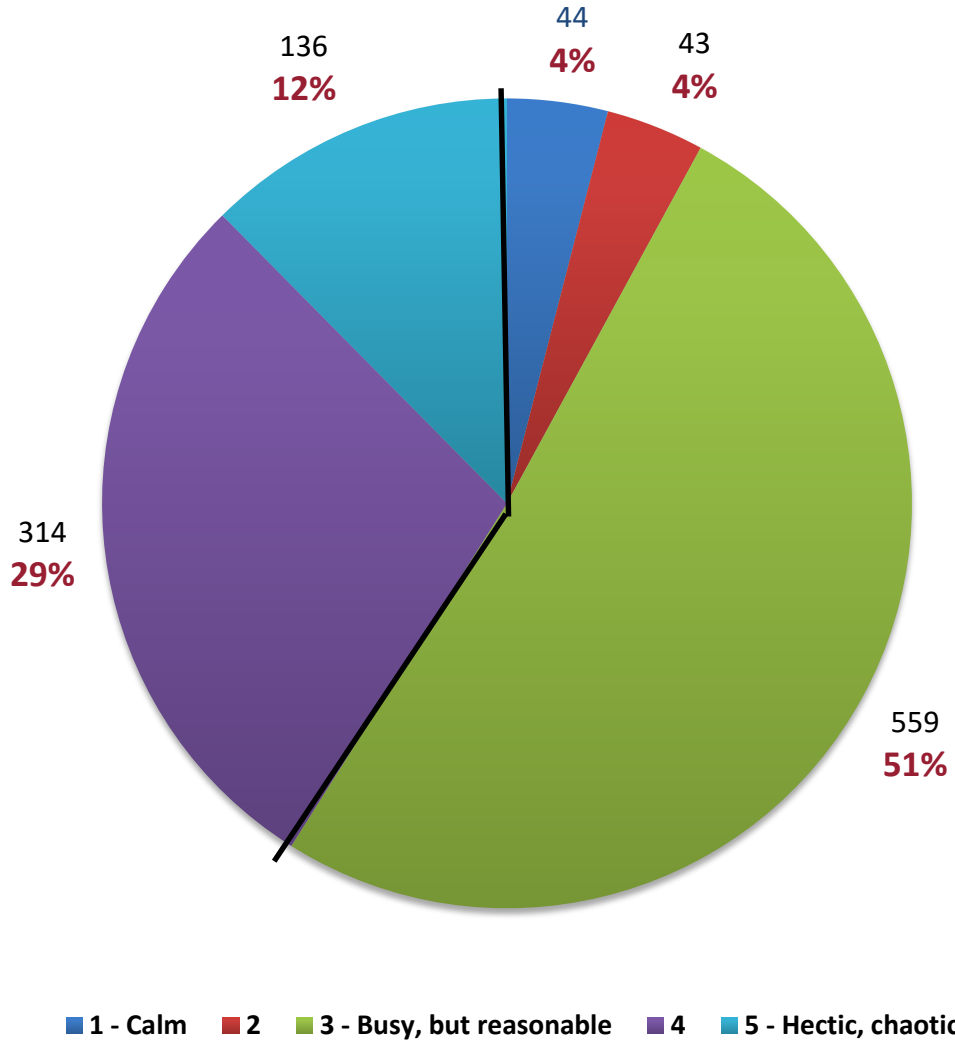


Optimal Good Satisfactory Marginal Poor

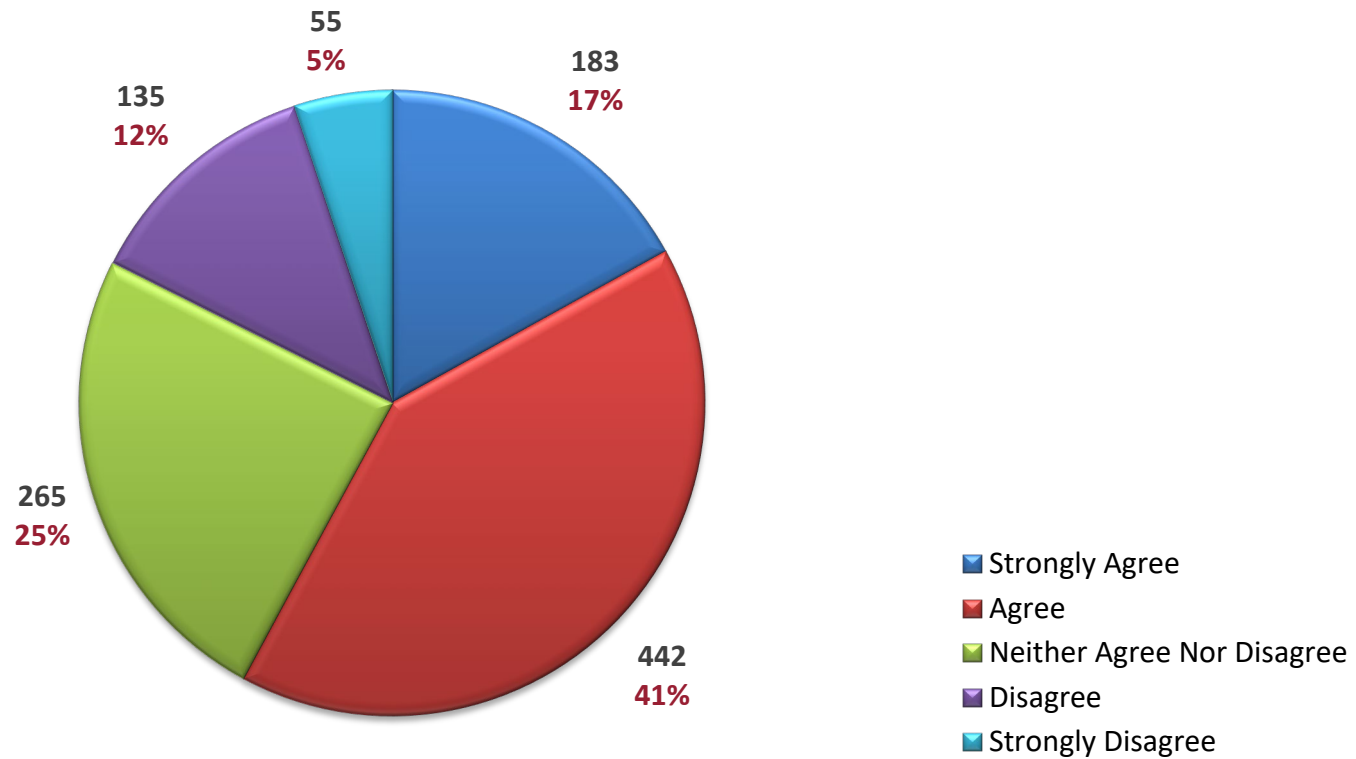
Time for documentation:



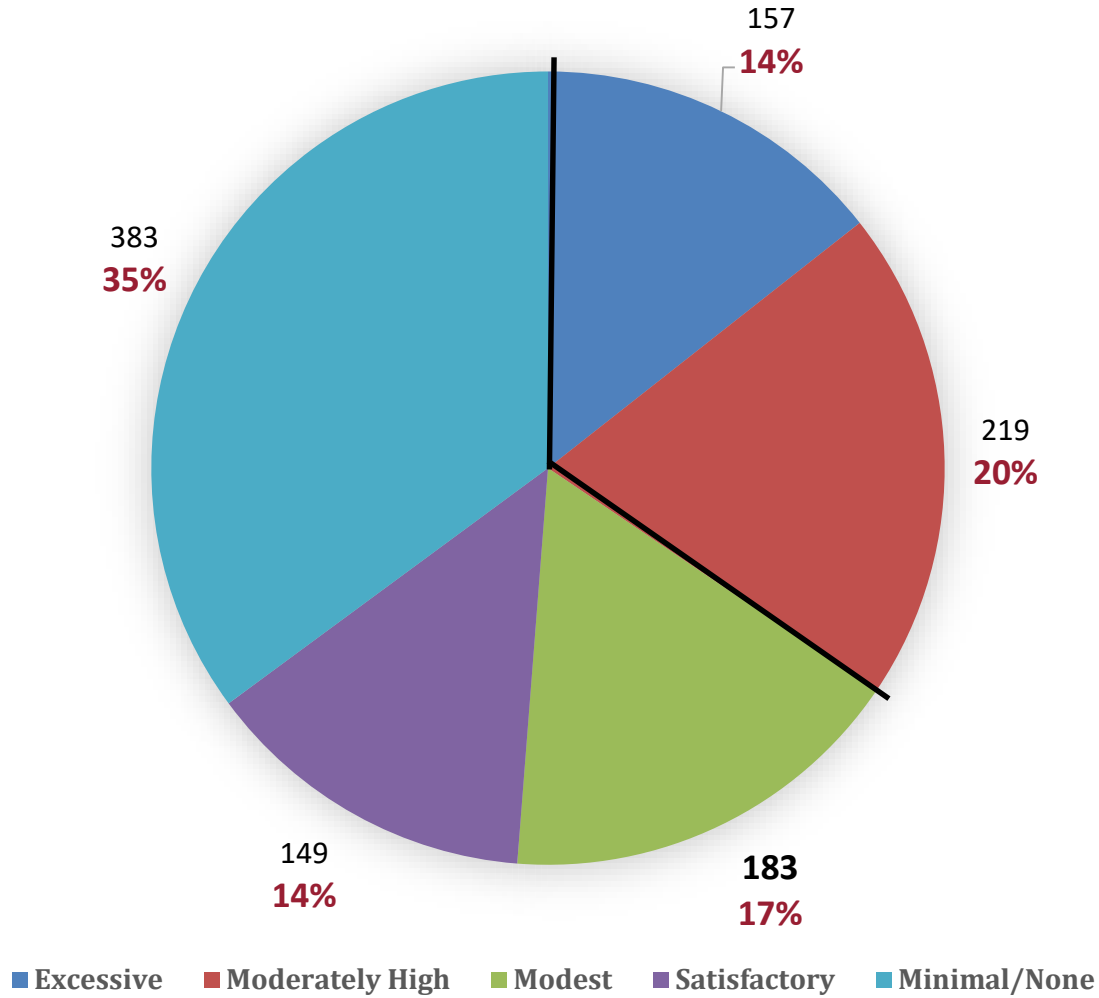
Work Atmosphere



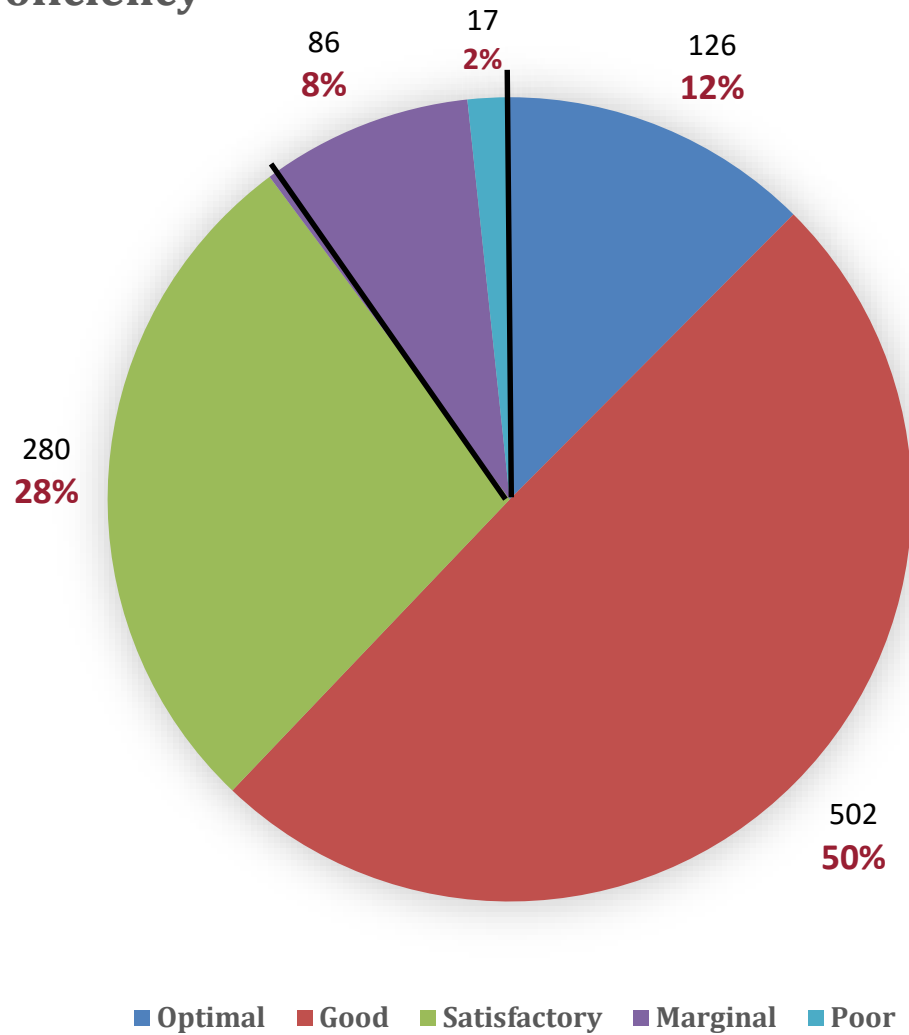
My professional values align with my department leaders:



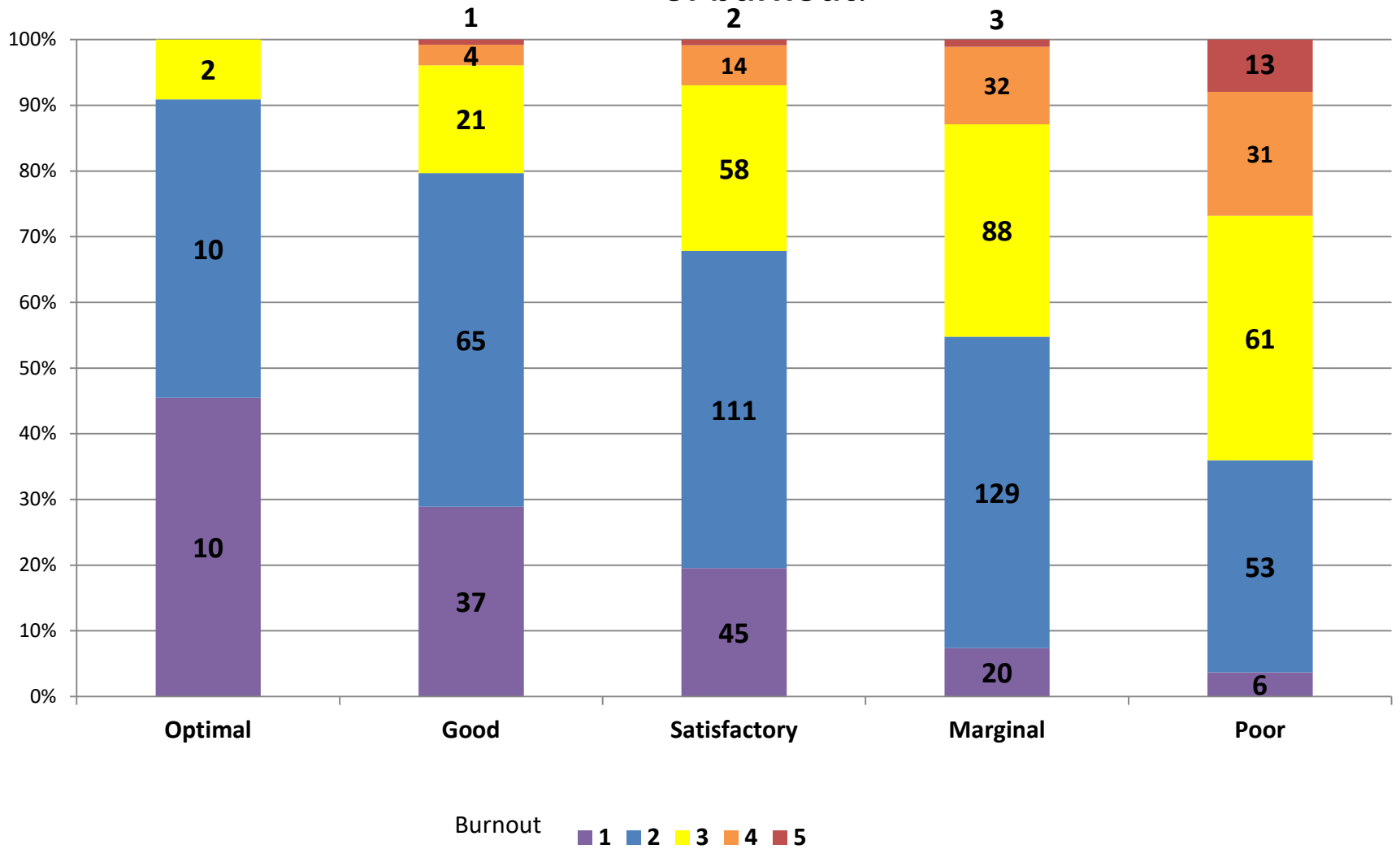
Time on EHR at home:



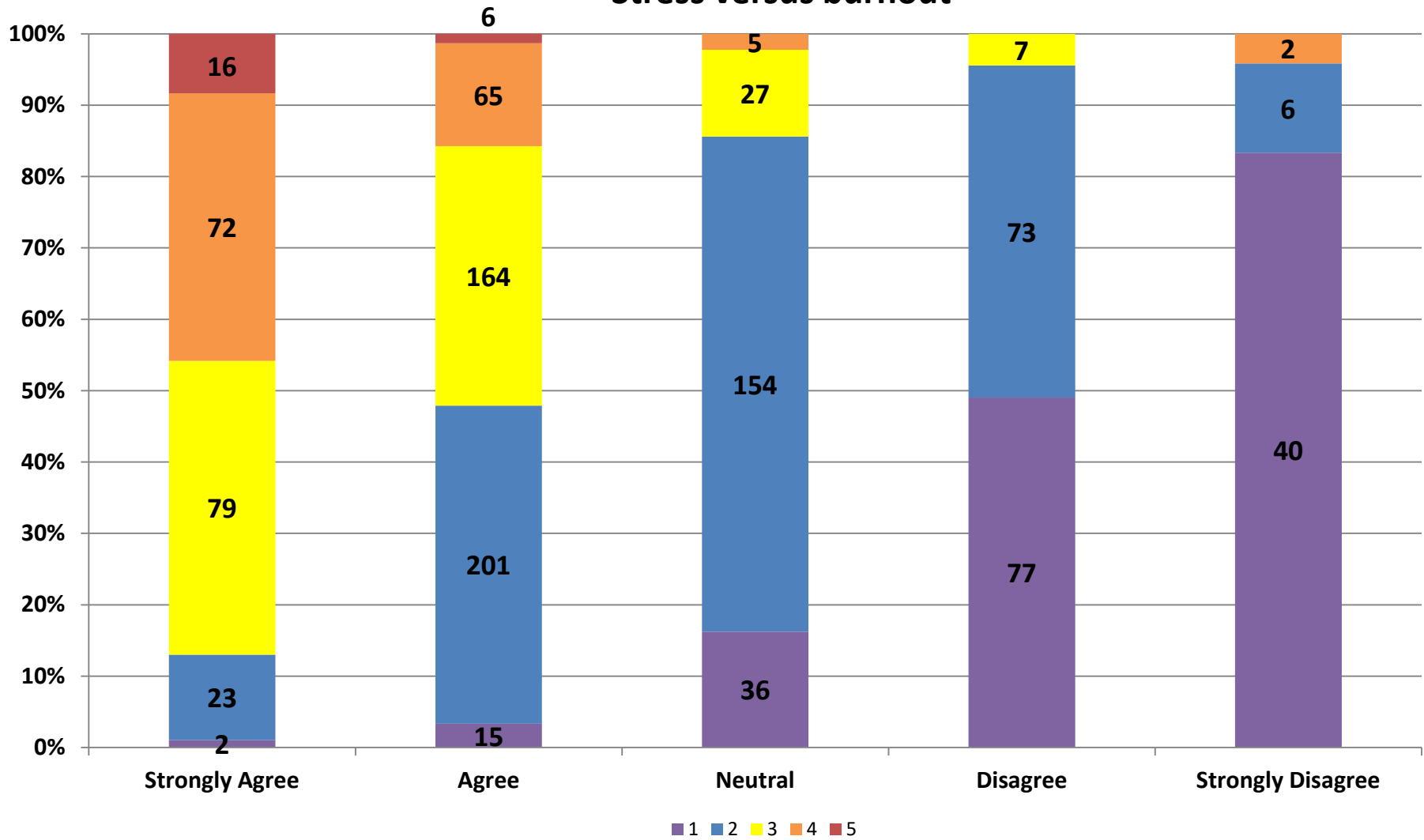
EHR Proficiency



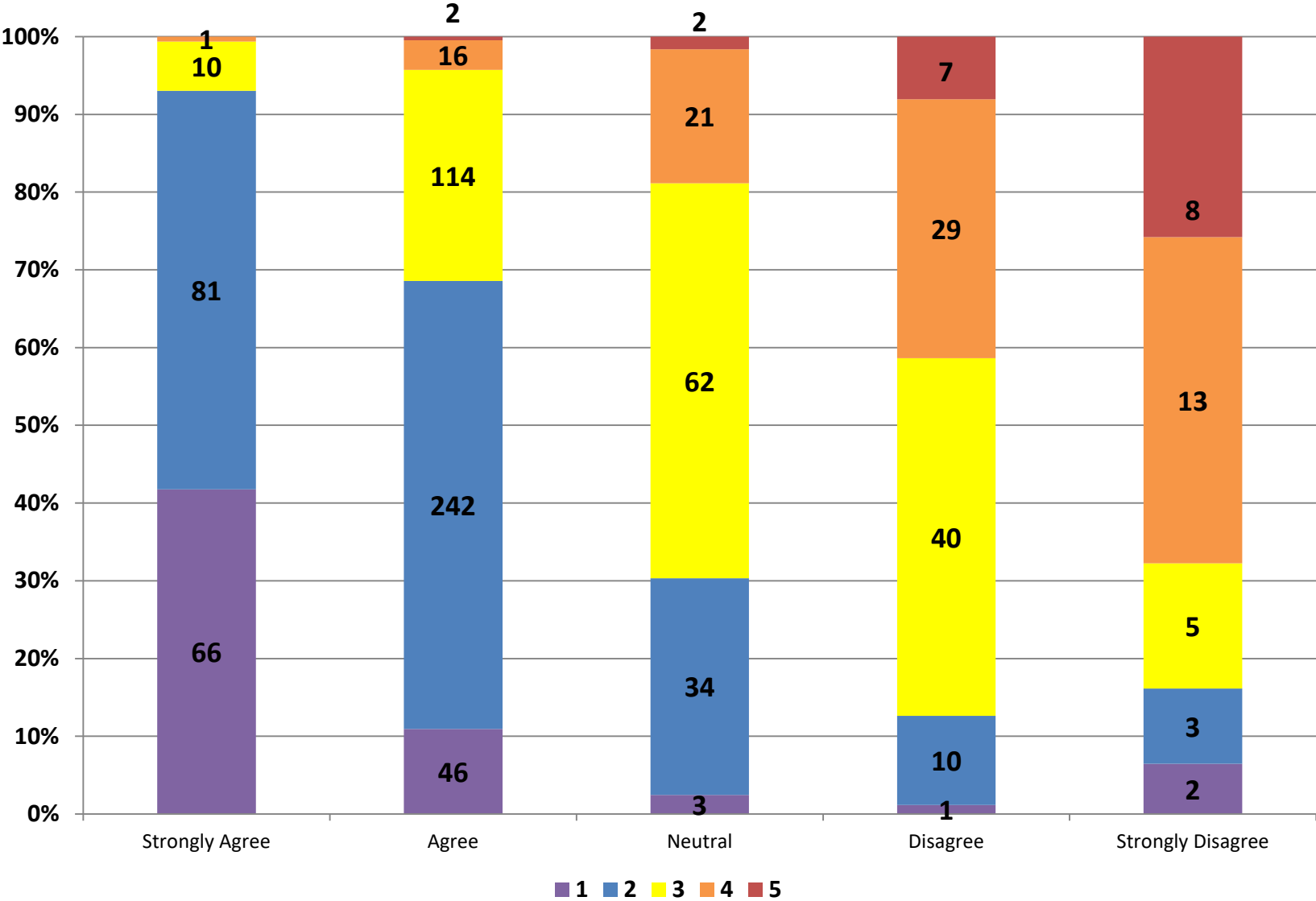
Sufficiency of time for documentation at work versus symptoms of burnout:



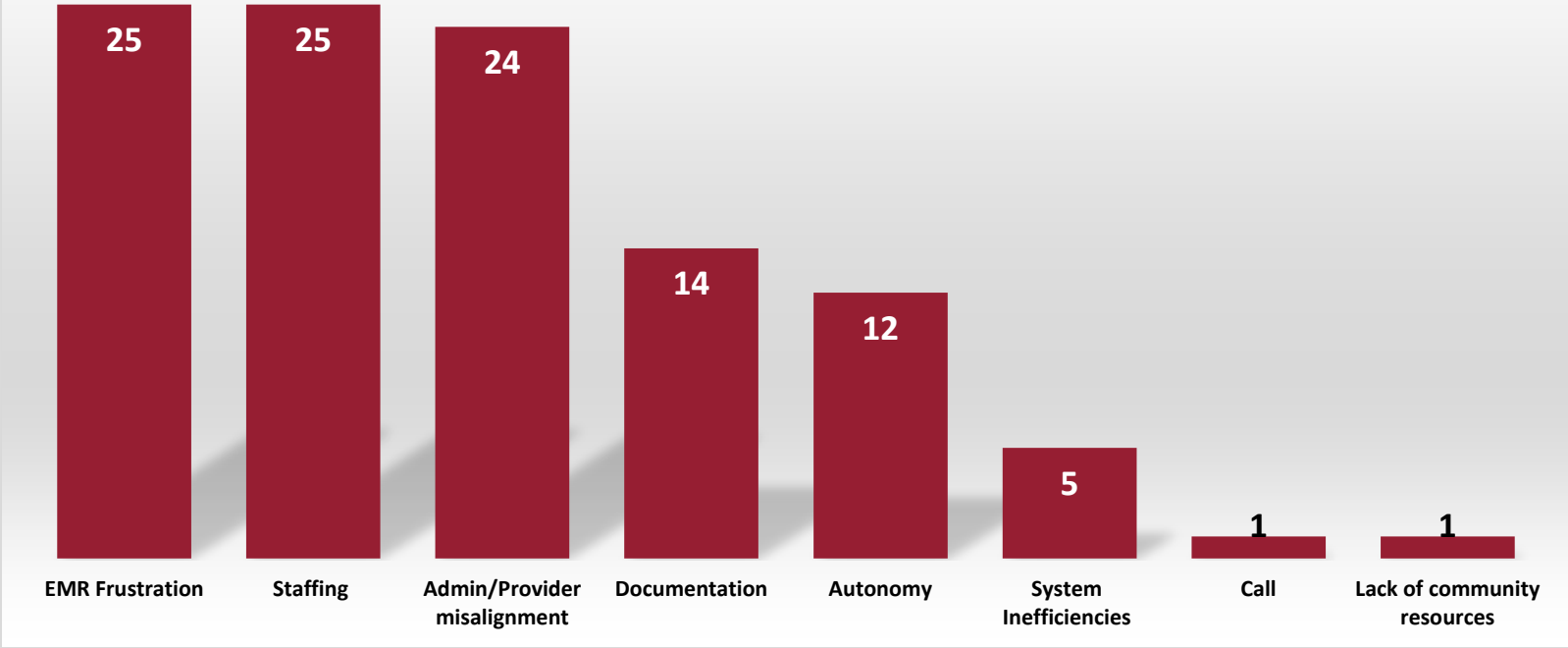
Stress versus burnout



Job satisfaction versus burnout



Comment Themes



*Excludes MMC Comments