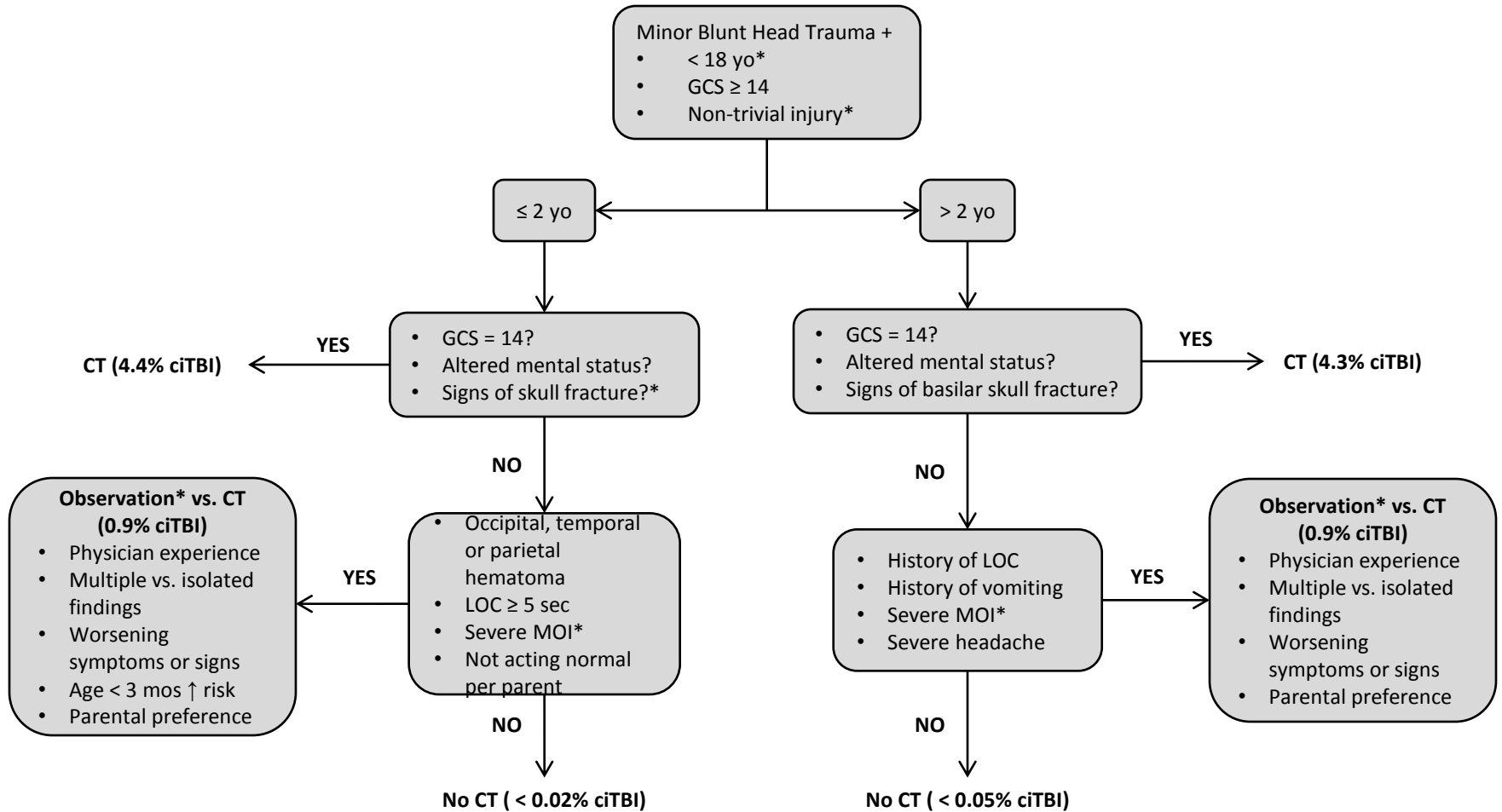


Pediatric Minor Blunt Head Trauma Guideline



- < 18 yo without ventricular shunt or bleeding disorder
- Trivial injury: ground-level fall, walking or running into stationary object, or no signs/symptoms other than scalp abrasion or laceration
- Severe MOI: MVC with patient ejected, death of passenger, rollover, unhelmeted pedestrian or bicyclist struck by MV, falls > 1.5m (5ft) for > 2 yo or > 0.9m (3ft) for < 2yo, head struck by high-impact object
- Observation: Short period of observation (4-6 hrs from injury) provides 3.9% absolute and 11% relative reduction in CT utilization; Estimated lifetime cancer mortality risk for head CT is 1:1500 for 1 yo and 1:5000 for 10 yo; lifetime risk of ANY cancer death 20%, additional risk from single CT is ~0.05%.
- Signs of skull fracture: Increased risk for < 1 yo, location (temporal/parietal > occipital > frontal), larger size, and palpation (boggy > barely palpable)
- ciTBI: death, neurosurgery, intubation > 24 hrs, hospital admission > 2 nights