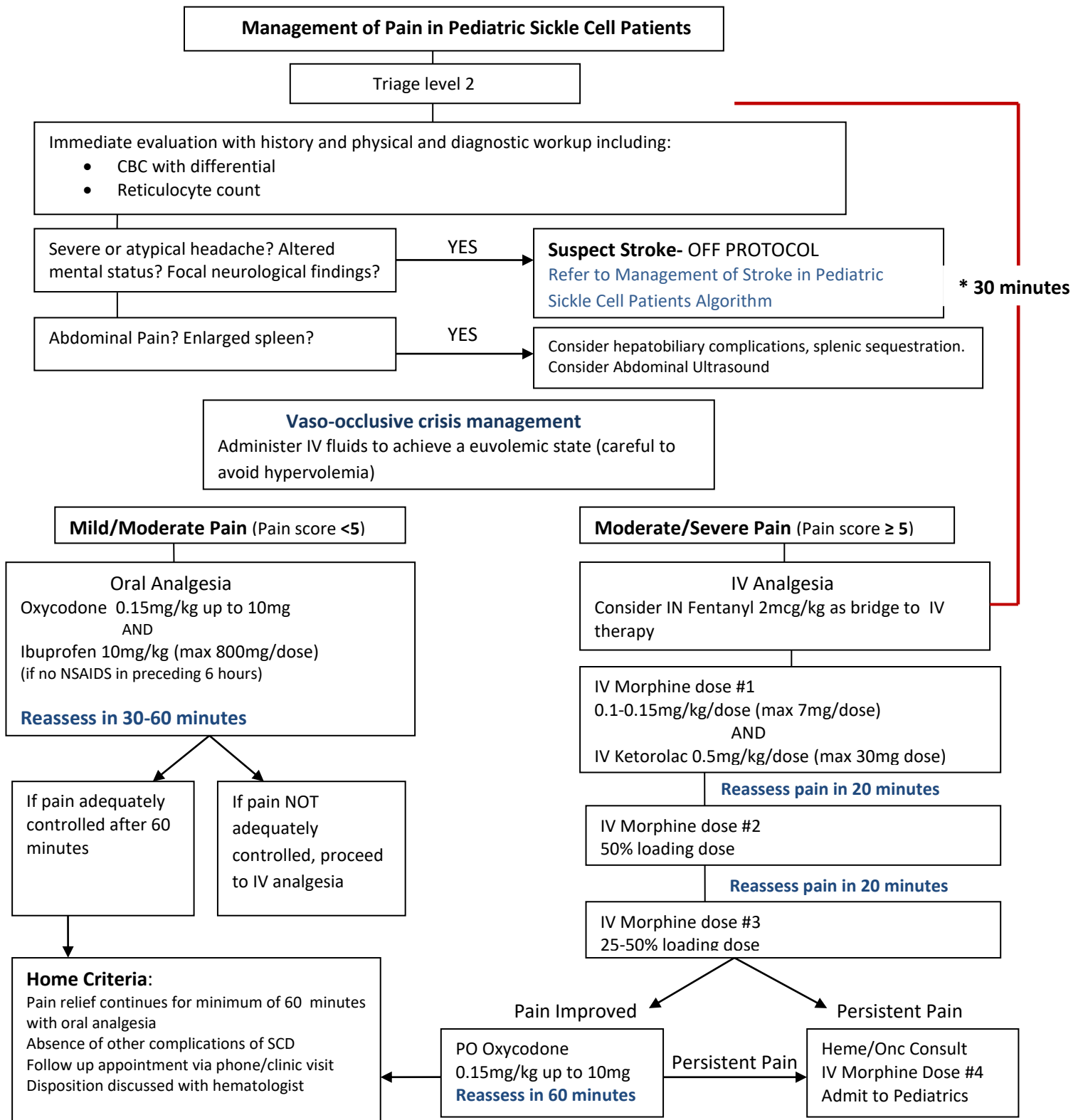


**CLINICAL ALGORITHM FOR INITIAL MANAGEMENT OF SICKLE CELL PATIENTS WITH PAIN**

This pathway should be used for patients with SS, SC, or Sβ-thalassemia type sickle cell disease who present with vaso-occlusive pain crisis. Please direct questions to Maine Children’s Cancer Program (207-396-7565)



**\*Begin analgesic management within 30 minutes of triage or 60 minutes of registration**



Algorithms are not intended to replace provider’s clinical judgment or to establish a single pro- problems may not be adequately addressed in this guideline. As always, clinicians are urged to management strategies.

## CLINICAL ALGORITHM FOR INITIAL MANAGEMENT OF SICKLE CELL PATIENTS WITH PAIN

This pathway should be used for patients with SS, SC, or S $\beta$ -thalassemia type sickle cell disease who present with vaso-occlusive pain crisis. Please direct questions to Maine Children's Cancer Program (207-396-7565)

Algorithms are not intended to replace provider's clinical judgment or to establish a single protocol. Some clinical problems may not be adequately addressed in this guideline. As always, clinicians are urged to document management strategies.