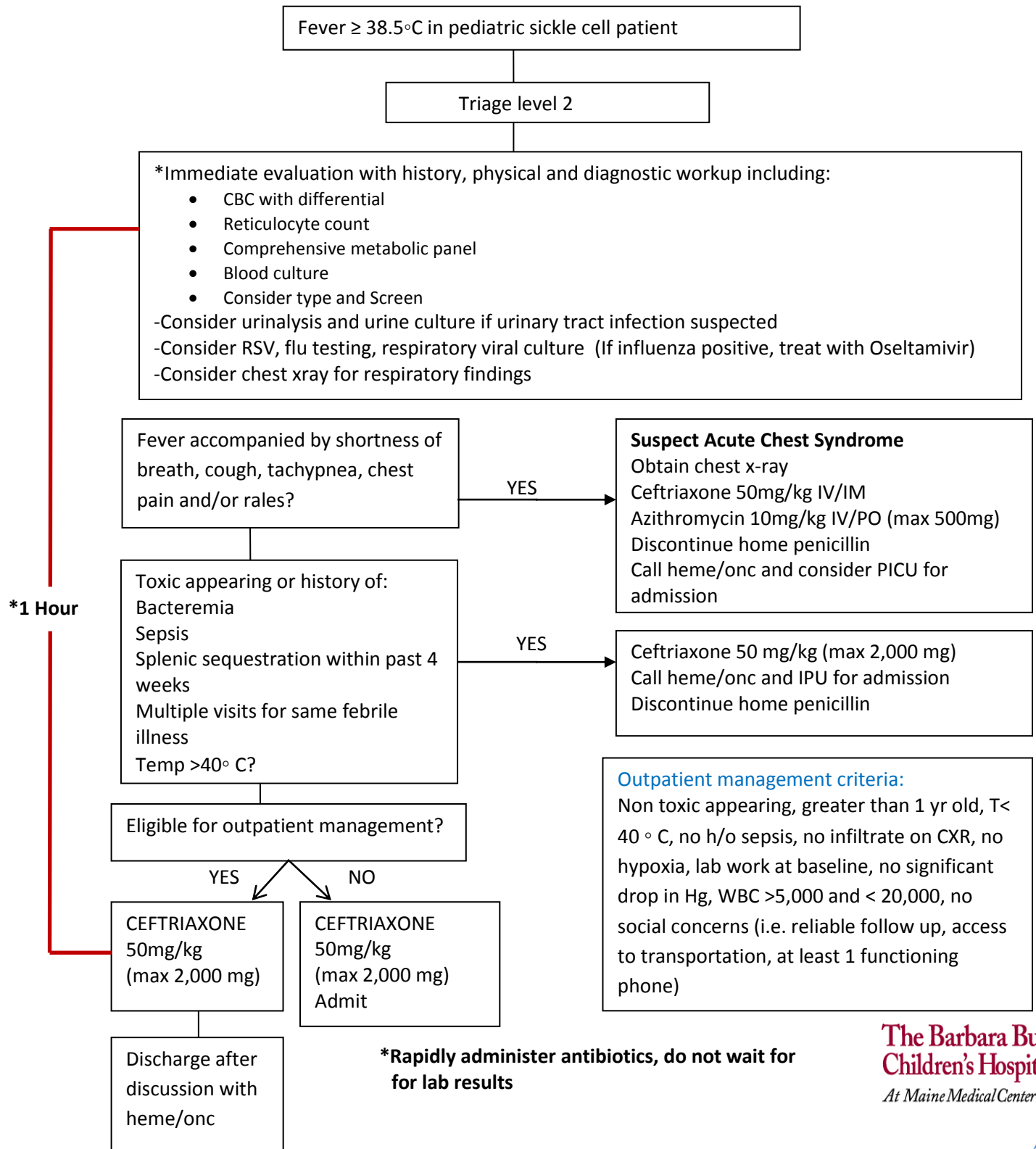


CLINICAL ALGORITHM FOR INITIAL MANAGEMENT OF SICKLE CELL PATIENTS WITH FEVER

This pathway should be used for patients > 2 months of age with SS, SC, or Sβ-thalassemia type sickle cell disease who have a temperature ≥ 38.5°C or history of temperature ≥ 38.5°C within 48 hours of presentation. Please direct questions to Maine Children's Cancer Program (207-396-7565)



Recommendations based on Evidence-Based Management of Sickle Cell Disease, Expert Panel Report, 2014 <http://www.nhlbi.nih.gov/guidelines>

Algorithms are not intended to replace provider's clinical judgment or to establish a single protocol. Some clinical problems may not be adequately addressed in this guideline. As always, clinicians are urged to document management strategies.