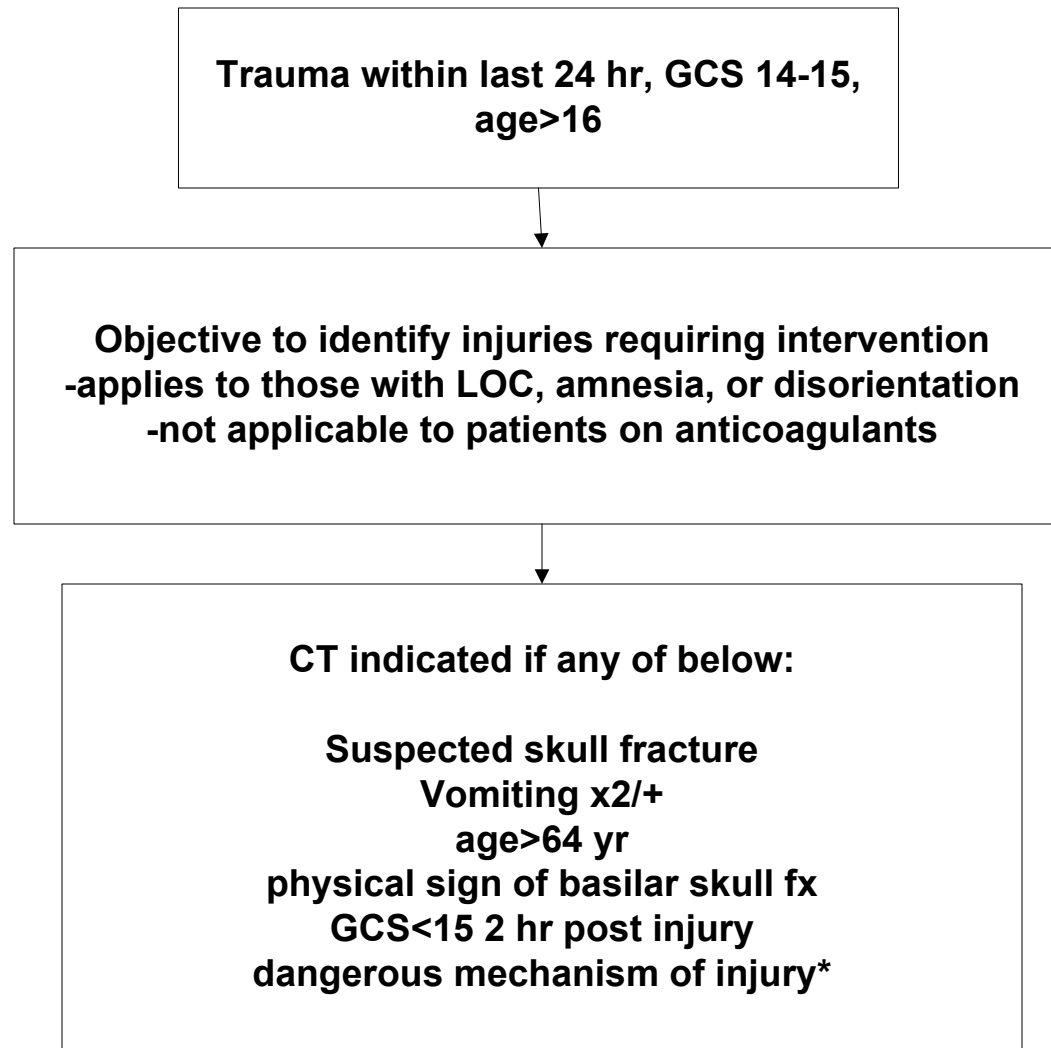


Minor Blunt Head Trauma Algorithm



* Dangerous mechanism defined as:
pedestrian struck by motor vehicle,
occupant ejected from motor vehicle,
fall from height >3 feet or 5 stairs

Stiell IG et al. The Canadian CT Head Rule for Patients with Minor Head Injury. Lancet. 2001 May 5;357(9266):1391-6

This guideline was ratified by the emergency department faculty at Maine Medical Center in February 2010. It reflects our expert opinion and is not necessarily applicable to all institutions. It is intended to be a reference for clinicians caring for patients and is not intended to replace providers' clinical judgment.

Produced by: William Gregorie, MD, Megan Fix, MD, and Jeff Holmes, MD

Guideline Topic: CT Imaging for Minor Head Trauma

Author: Doug Gregorie

Date of Creation: 10/4/2009 Sugg Update: 10/4/2011

Search Criteria: _____

Databases: Pubmed, Ovid

Key Guidelines (Dates) _____

#	Recommendation	Source	Classification	Level of Evidence
1	CT Head indicated for those with loss of consciousness, posttraumatic amnesia or disorientation and: age>64, vomiting>2x, sign of basilar skull fx, GCS<15 2hr after injury, or dangerous mechanism of injury	Sier et al, The Canadian CT Head Rule for patients with minor head trauma. Lancet 2001	prospective cohort	B
2		Smith et al, External validation of the Canadian CT Head Rule and the new Orleans Criteria for CT scanning in patients with minor head injury. JAMA 2006	prospective randomized control	B
3				