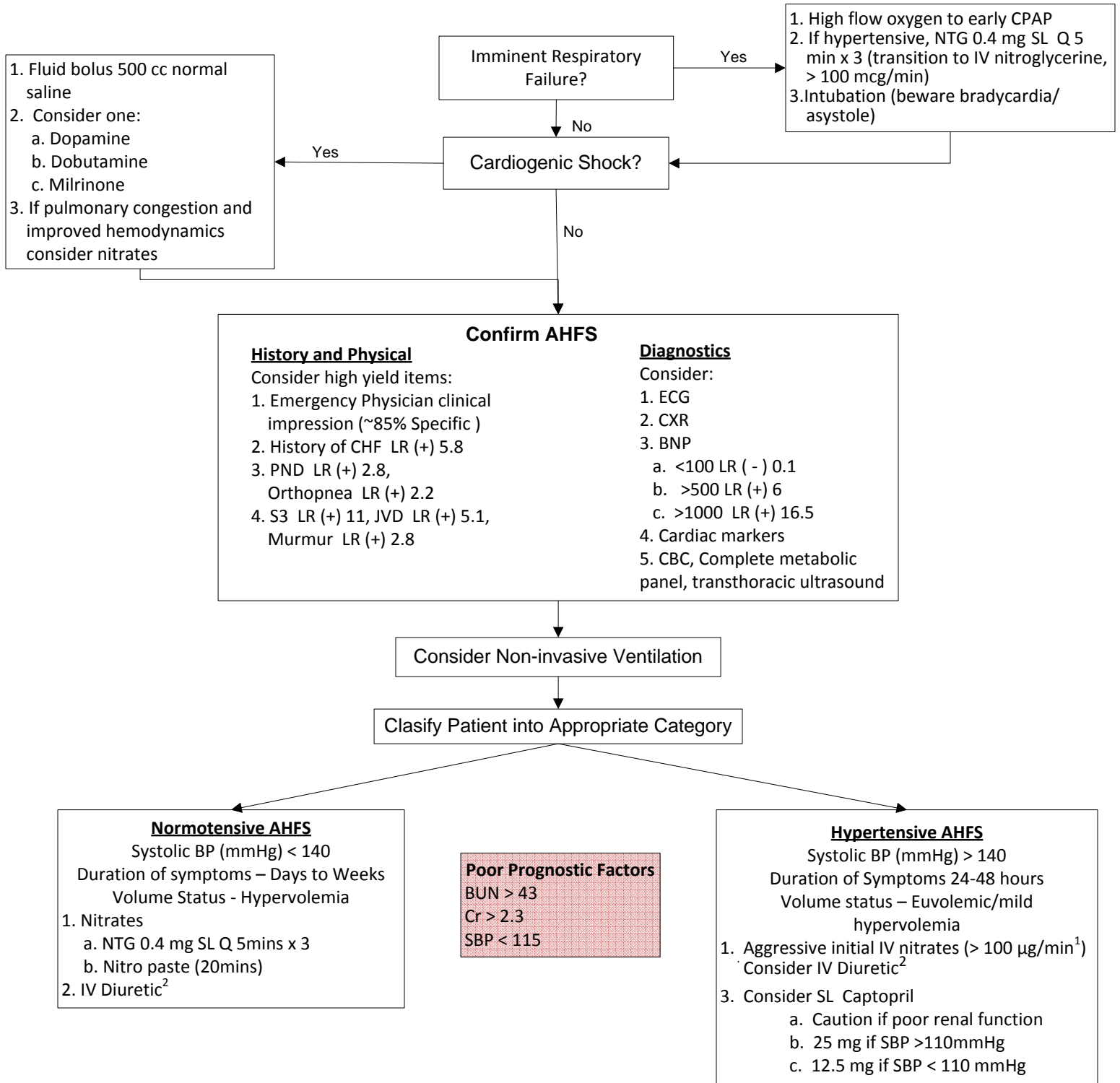


Dyspnea Secondary to Suspected Acute Heart Failure Syndrome (AHFS)



1. One SL nitroglycerine is approximately 80 mcg/min. Consider decreasing nitroglycerine gtt's once clinical condition improves
2. MMC CHF Team goal is < 2 hours from door to diuretic. Caution should be exercised if poor renal function. A reasonable starting dose of diuretic is to give the patient's daily PO dosage IV.

This guideline was ratified by the emergency department faculty at Maine Medical Center in August 2010. It reflects our expert opinion and is not necessarily applicable to all institutions. It is intended to be a reference for clinicians caring for patients and is not intended to replace providers' clinical judgment.