

BUILDING CODE SUMMARY

St. John Street Parking Garage
Building Address: Portland, ME

APPLICABLE CODES (Per MUBEC: Maine Uniform Building and Energy Code)

Building	IBC 2015 (International Building Code)
Electrical	IEBC 2009 (International Existing Building Code)
Fire Protection	National Electrical Code 2009
Mechanical	NFPA Life Safety Code 2009 and NFPA 1 Uniform Fire Code 2003
Plumbing	International Mechanical Code 2009 (ISHRAE 62.1 2007 and 90.1 2007)
Energy	Maine State Internal Plumbing Code (LUPC 2009)
Accessibility	IECC 2009 (International Energy Conservation Code)
	ADA 2010 (Americans With Disabilities Act)

PROJECT DESCRIPTION:

New Construction - Open Parking Garage	Meets IBC 406.5 and NFPA 101: 3.3.254.6
Proposed Construction Type:	Type I B / NFPA II (222)
Gross Area Per Tier:	90,800 +/-
Height:	8 Tiers / 96'-3" (Top of Speed Ramp Roof Double Tees)
Use Group IBC:	Open Parking Garage Section 406
Use Group NFPA:	Open Parking Garage Chapter 42.8
High Rise Requirements	Exemptions for Parking Garages
	IBC 403.1
	NFPA 101 42.8.4
Automatic Suppression System	No
Dry Standpipe System	Yes

BUILDING CODE REQUIREMENTS (IBC 2015)

Height and Area Summary (Table 406.5.4)

Allowable Height:	12 Tiers
Allowable Area:	Unlimited

REQUIRED FIRE RESISTANCE RATINGS

ELEMENT (IBC Table 601/NFPA 101 Table A8.2.1.2)	RATING (In Hours)
Primary Structural Frame	2
Bearing Walls:	
Exterior	2
Interior	2
Non-Bearing Walls & Partitions	
Exterior	0
Interior	0
Floor Construction & Secondary Members	2
Roof Construction & Secondary Members	2

SPECIFIC ROOM RATINGS

Room	RATING (In Hours)
Stairs and Floor Openings	0
Parking Open Ramps	0
Offices + Break Room	0
Electrical	0
Mechanical Room	1
Elevator Shaftway	2

EXTERIOR WALL PROTECTION

Wall Fire Resistance Rating (Table 602)	0
Openings Rating (Table 705.8)	0 (No rating for 10' or greater per Note c.) 0 (No rating for 10' or greater per Note g.)

OCCUPANCY LOADS

NFPA Per Chapter 42.8.1.7:	None
IBC Per Table 1004.1.2:	1 Per 200 GSF / 454 Per Tier
Egress Width Required: Stairs @ 0.3' Per Person	137"
Egress Width Provided:	144" (3) 48" Wide Stairs / 152 Persons Each
Stair Exit Door Width Required:	30.4"
Stair Exit Door Width Provided:	32" Clear Door @ Each Stair

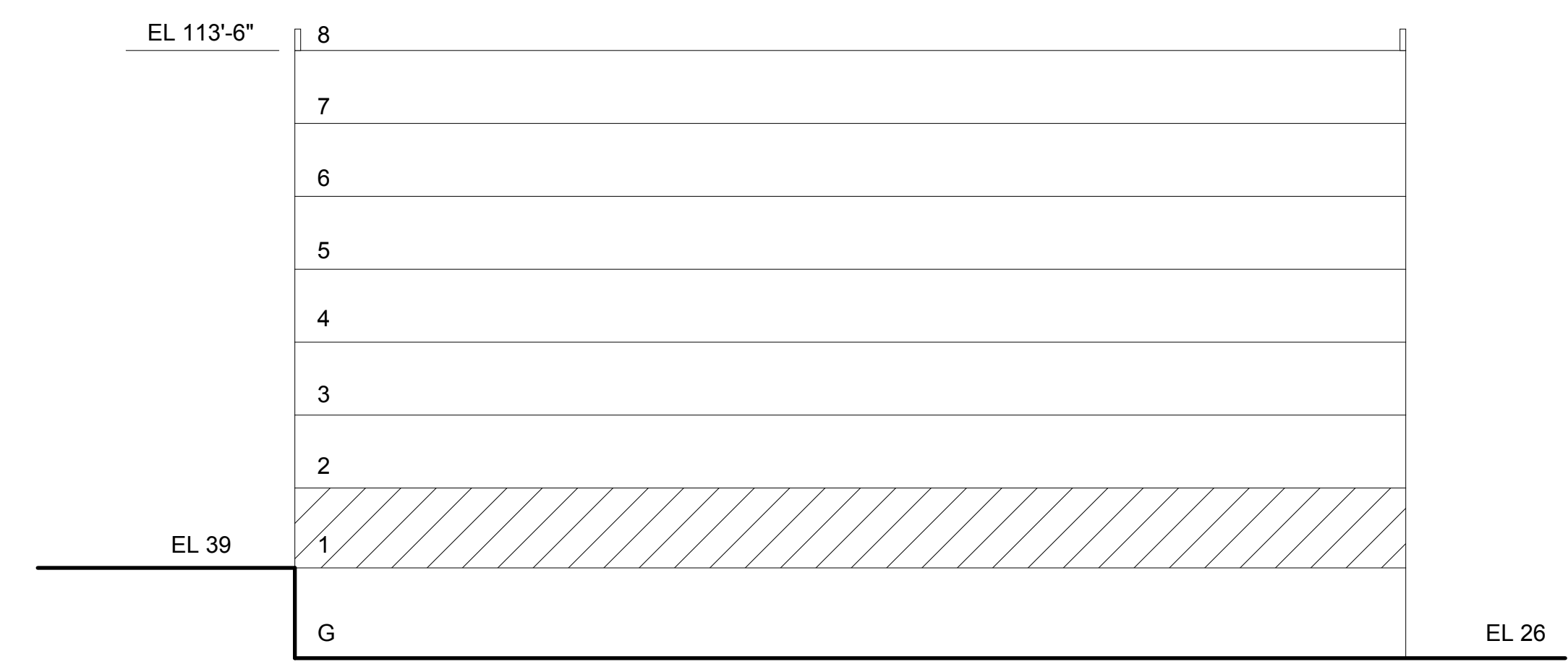
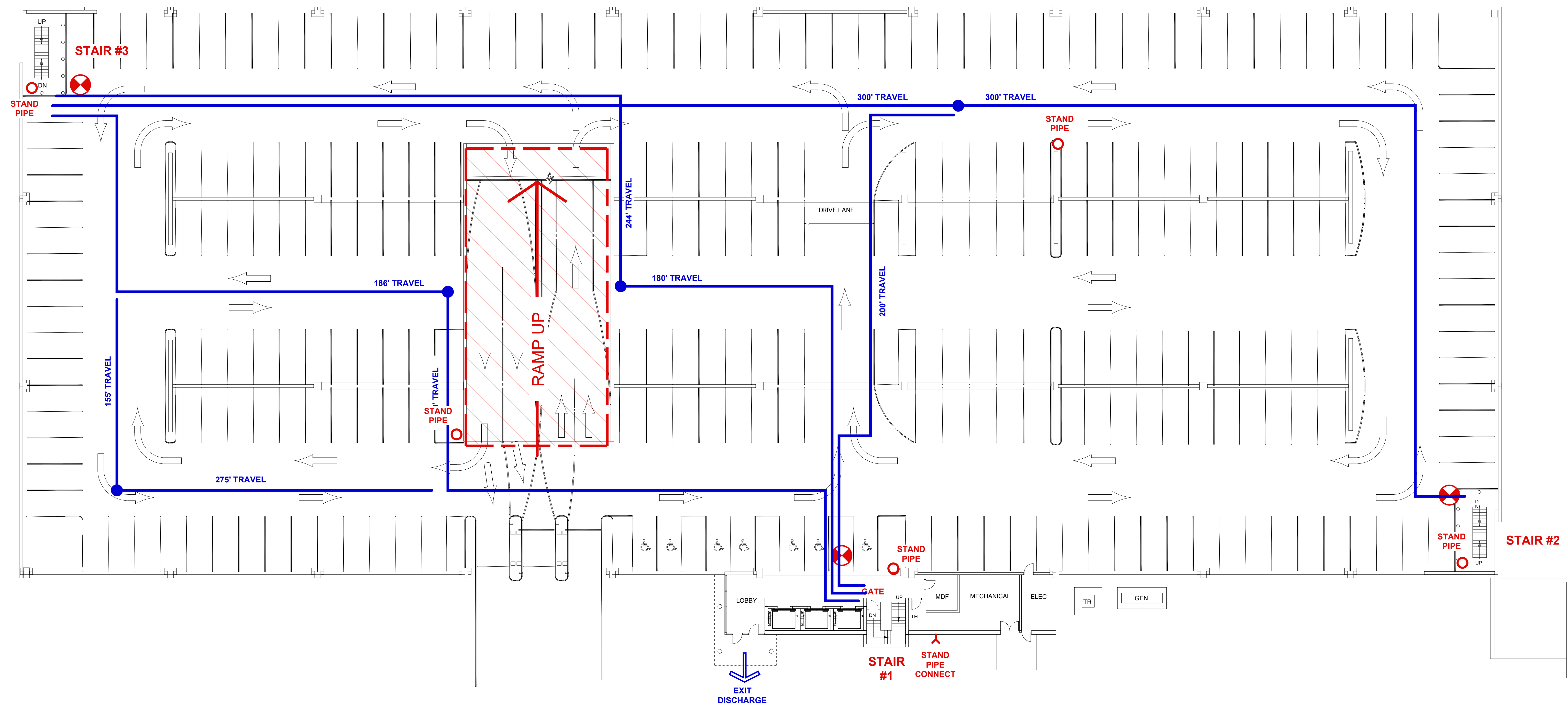
OPENNESS CALCULATIONS:

FIRST FLOOR SUMMARY IBC

IBC 2015 SECTION 406.5	
GROUND FLOOR WALL AREA:	13,536 SF
GROUND FLOOR NET OPEN AREA:	7,014 SF
OPENNESS RATIO [20% REQD]	51%
OPENINGS DISTRIBUTED AROUND 92% OF THE PERIMETER [40% REQD]	

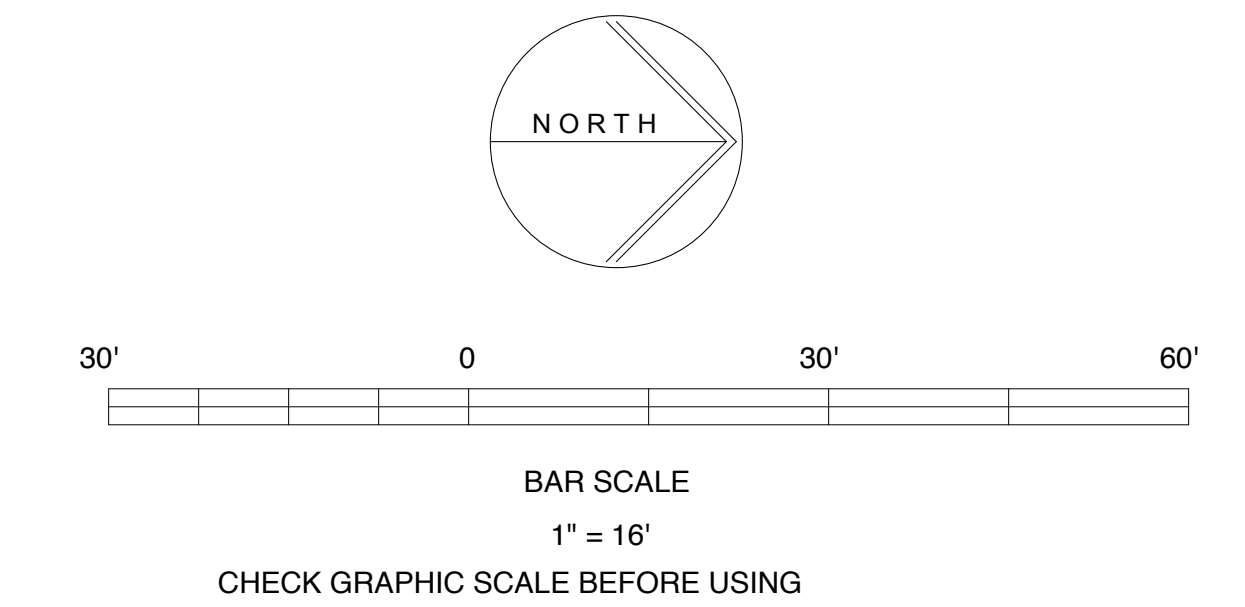
FIRST FLOOR SUMMARY NFPA

NFPA 101 3.3.254.6	
GROUND FLOOR PERIMETER:	1,332 LF
GROUND FLOOR NET OPEN AREA:	7,014 SF
OPEN AREA PER LF [1.4 SF REQD]	5.2 SF/LF
OPENINGS DISTRIBUTED AROUND 92% OF THE PERIMETER [40% REQD]	



FIRST FLOOR CODE INFORMATION PLAN

1" = 20' - 0"



PARKING GARAGE SECTION DIAGRAM

THIS DRAWING IS AN INSTRUMENT OF SERVICE AND SHALL REMAIN THE PROPERTY OF BECKER STRUCTURAL ENGINEERS INC. IT SHALL NOT BE REPRODUCED, COPIED, LENT OR LOANED OR IN ANY MANNER USED FOR ANY PURPOSE OTHER THAN THAT FOR WHICH IT IS SPECIFICALLY PREPARED AND MUST BE RETURNED TO BECKER STRUCTURAL ENGINEERS INC. ON COMPLETION OF WORK, IF REQUESTED.

Appr'd	
Issued For	
Date	
Rev No	

MMC ST. JOHN ST PG
PORTLAND, ME
CODE INFORMATION PLANS

Designed	MMW	AS NOTED
Checked	MMW	6/22/18
Checked	MMW	4070.1

NOT FOR CONSTRUCTION
LEVEL III SITE PLAN APPLICATION
6 / 22 / 18