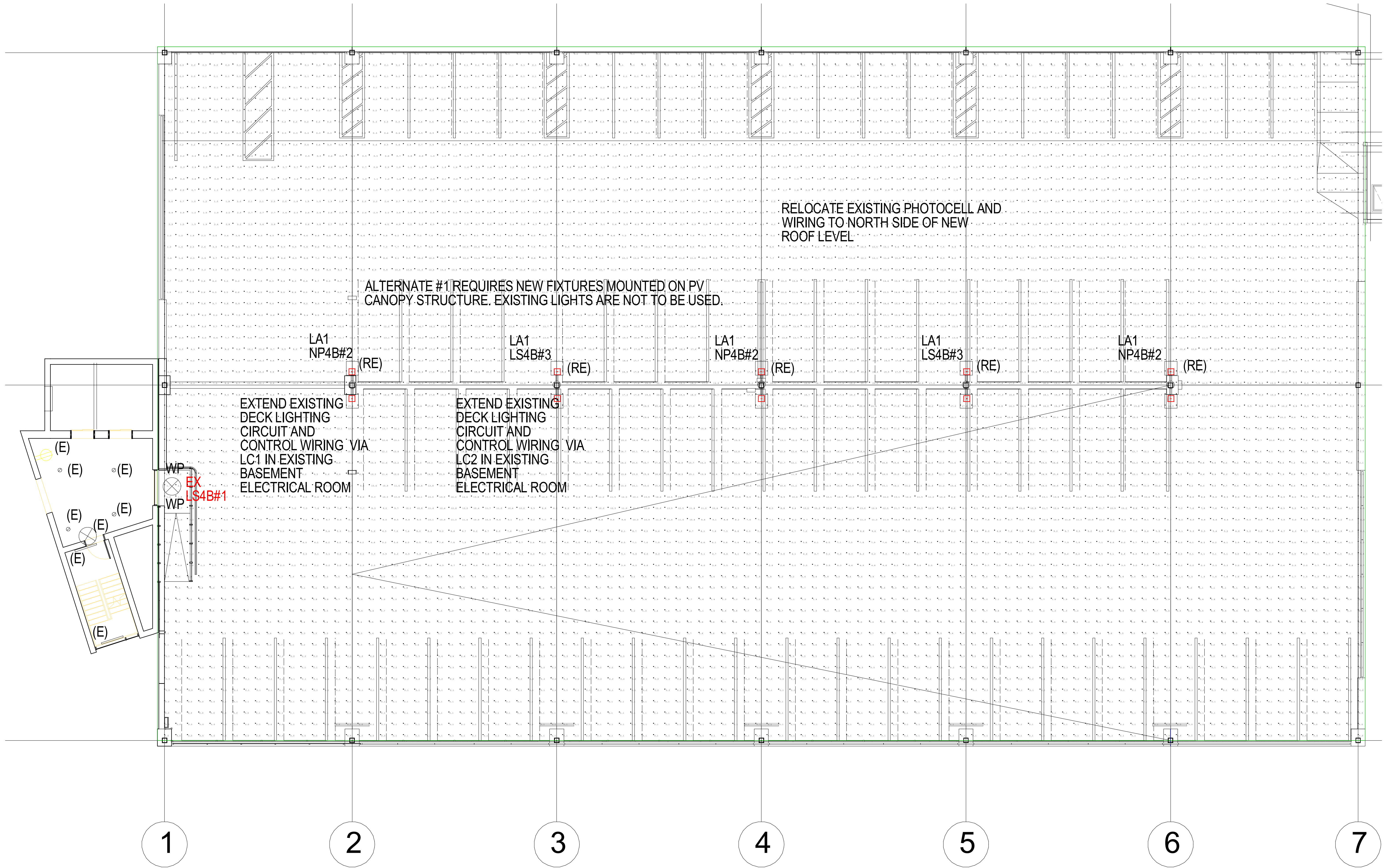
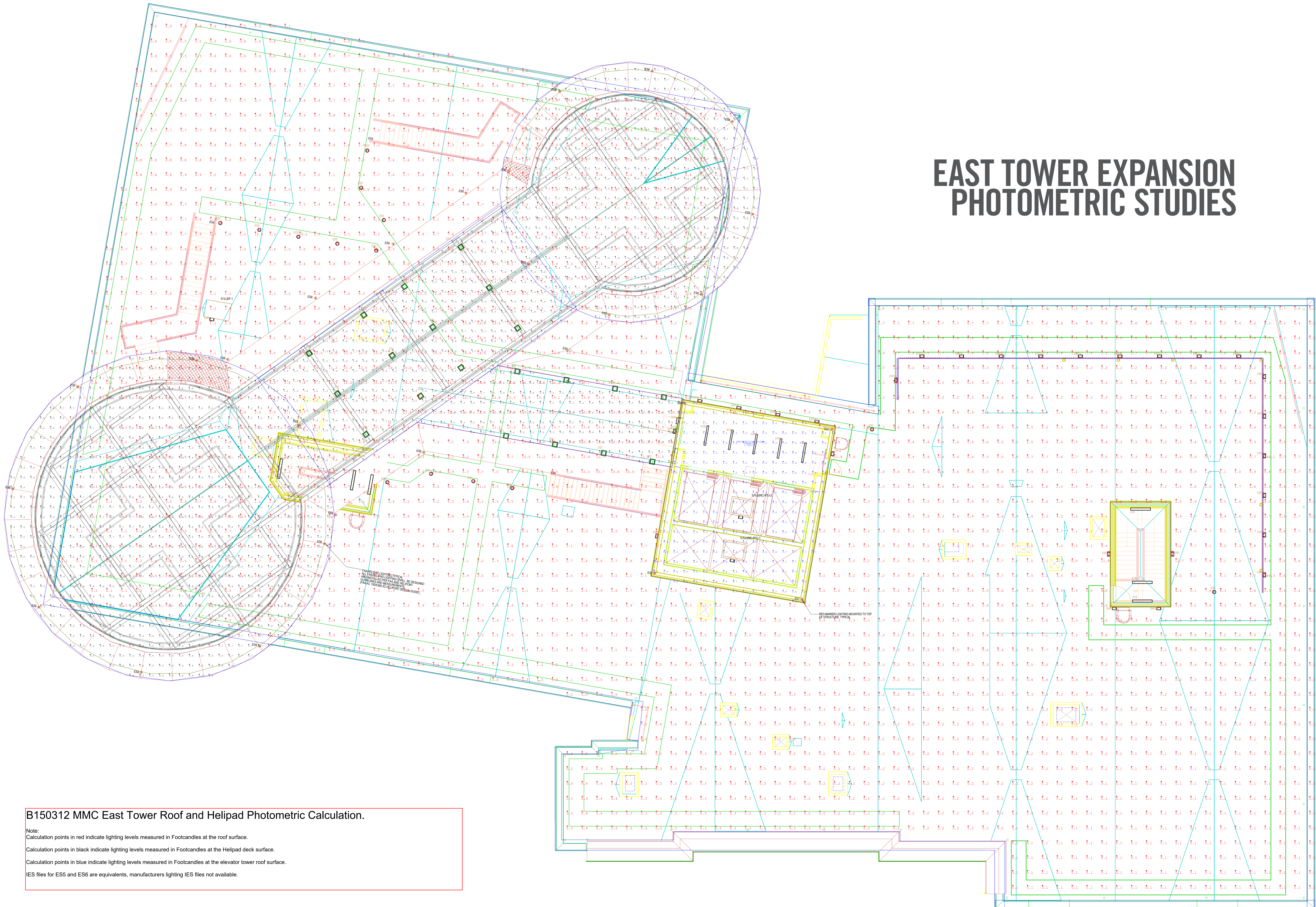


# VISITOR GARAGE EXPANSION PHOTOMETRIC STUDIES





# EAST TOWER EXPANSION PHOTOMETRIC STUDIES



**B150312 MMC East Tower Roof and Helipad Photometric Calculation.**

Note:  
Calculation points in red indicate lighting levels measured in Footcandles at the roof surface.  
Calculation points in black indicate lighting levels measured in Footcandles at the Helipad deck surface.  
Calculation points in blue indicate lighting levels measured in Footcandles at the elevator tower roof surface.  
IES files for ES5 and ES6 are equivalents, manufacturers lighting IES files not available.