

August 18, 2021

Helicopter Routes to, from MMC to Shift Slightly to Accommodate Construction

The installation of construction cranes this fall at the site of the future Malone Family Tower on Congress Street will necessitate temporary changes to the preferred flight routes for LifeFlight Helicopters during non-work hours.

The cranes will be erected in October, 2021. During working hours, the cranes will have operators who will coordinate with incoming LifeFlight helicopters, and vacate the preferred flight routes in most cases.

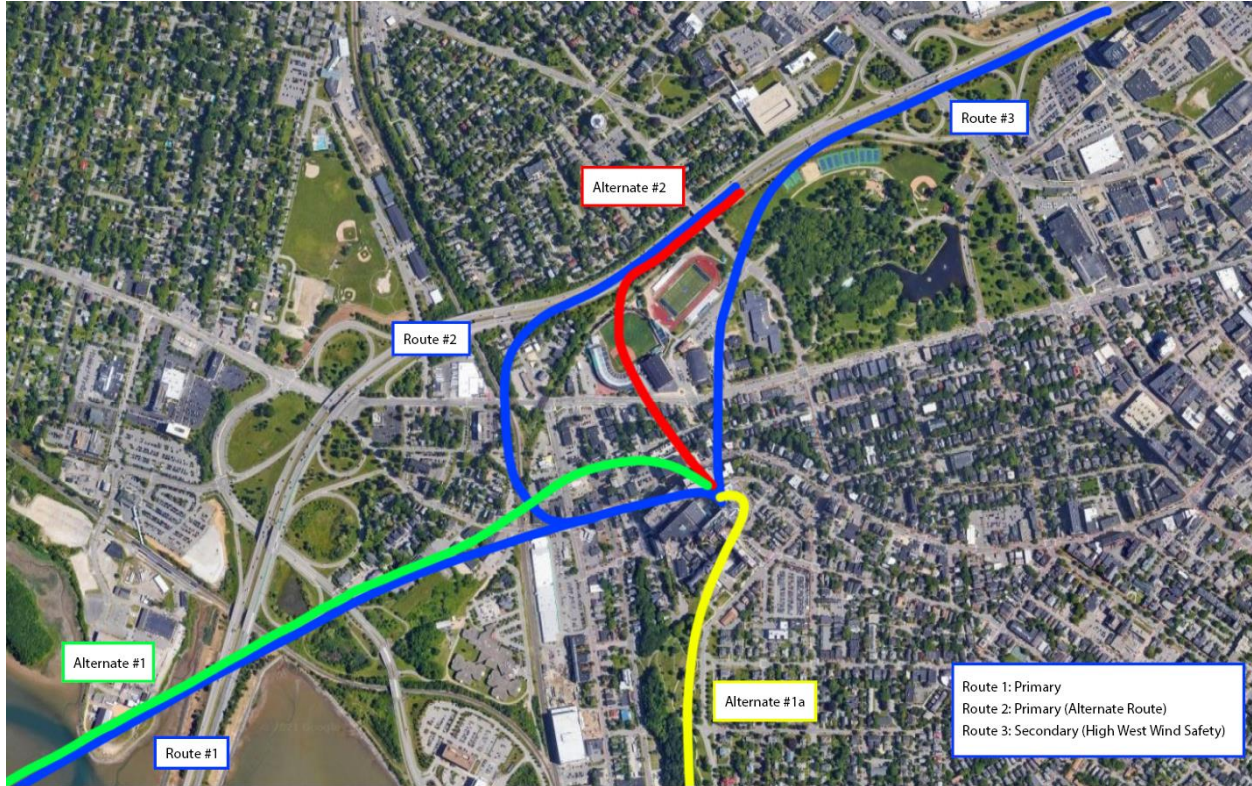
However, during non-work hours, the cranes will be locked into one location at the site and allowed to “weathervane,” which means the crane boom will shift with the wind. This is an industry standard practice, ensuring the booms are not subjected to high wind forces.

During these non-work hours, LifeFlight pilots will slightly modify their routes to avoid the construction site. The preferred routes and the modified routes can be seen in the illustration, below. Both the original preferred routes and the new, alternate routes are approximations of the path the pilots take.

Route 3 will not be impacted, only Routes 1 and 2. Please note, there are two alternates for Route 1, which may be used depending on wind direction and other meteorological factors.

This adjustment to the preferred flight routes will end when the cranes are removed at the end of the project.

Temporary Alternative Flight Routes



Current Preferred Flight Routes (Congress Street Construction Site in Red)



Maine Medical Center
MaineHealth

