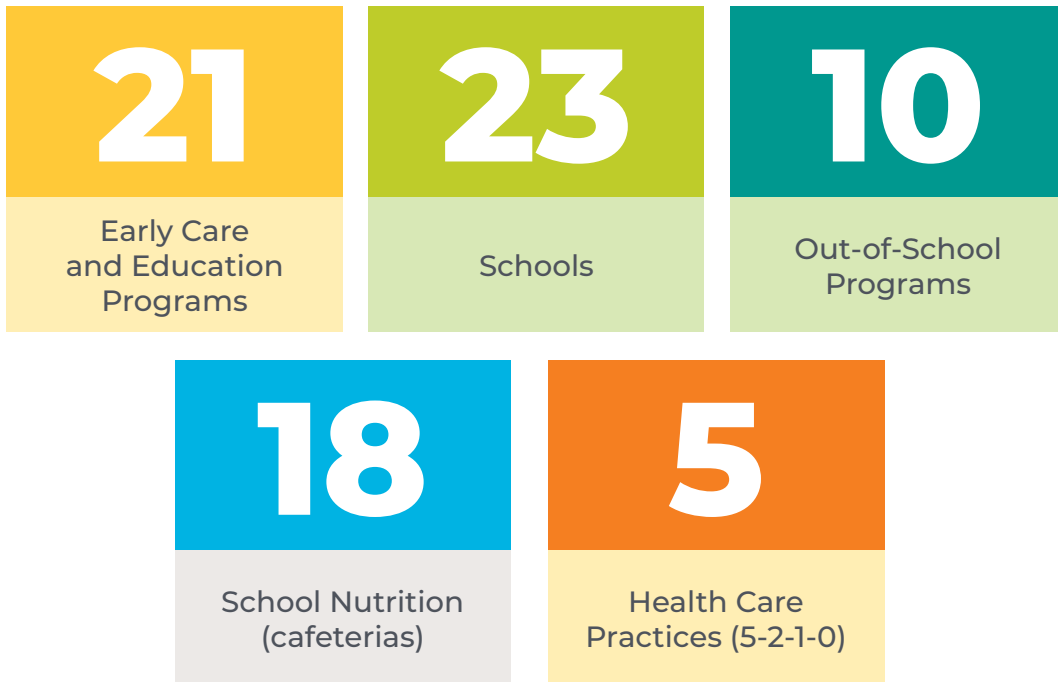


The prevalence of obesity in Sagadahoc County is 18% for middle school students, 15% for high school students, and 32% for adults. This is why local Let's Go! Coordinators partner with **77 sites** in our region to promote healthy habits.



We offer 'I tried It!' stickers and it works great!

— School, Bath



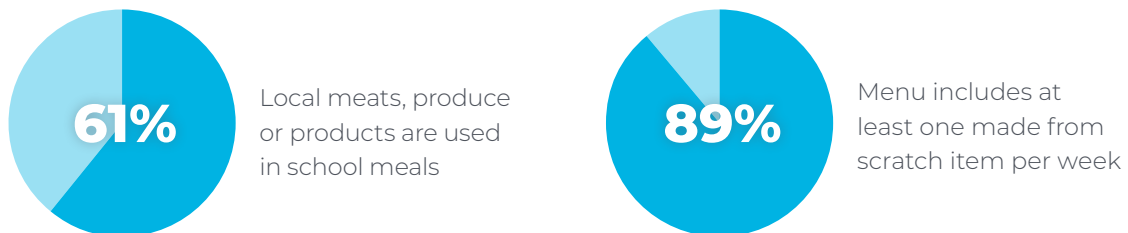
Let's Go! sites are supporting healthy, happy kids who are ready to learn!

(n = 42 schools, early care and education and out-of-school programs reporting)



Let's Go! school cafeterias are serving healthy meals that include local products and scratch cooking!

(n = 18 school cafeterias reporting)



Let's Go! health care practices are motivating kids to build good habits that will last a lifetime!

(n = 3 practices reporting)

